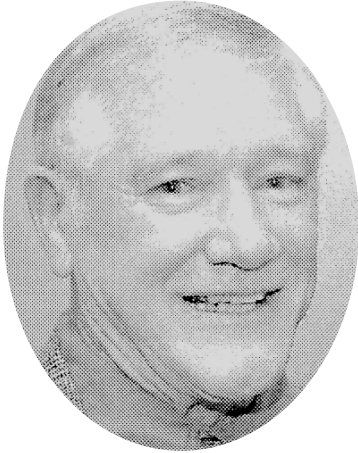


## *Jerry McGee*



In an outstanding career that spanned five decades, **Jerry McGee** left his mark in athletics at just about every level possible.

Whether it was as a high school or collegiate athlete, playing in local softball and touch football leagues, or coaching for nearly two decades, McGee earned high marks in whatever he did.

Born in 1938 in Oceanport, NJ, McGee graduated from Long Branch High School in 1956 after a stellar four-year career in football and baseball. He was a linebacker and defensive back on the football team that won the Central Jersey Group III championship, while in baseball he played third base and outfield, and batted a sizzling .399. He even earned a tryout with the Brooklyn Dodgers during their hey-day in 1956.

After high school, McGee continued his athletic career in the United States Air Force while stationed in Prum, Germany from 1956-'60. He played third base for the Prum Taconeers baseball team, and was on the soccer team that won the Wing championship and finished in third place overall in the German League.

Upon returning to the States, McGee enrolled at the University of Bridgeport in 1961 on a baseball and soccer scholarship. Ironically, it was Ralph King a future coaching colleague at Brien McMahon High School, who was at UB at the same time, who helped McGee get both scholarships.

While McGee played football in high school, he would enjoy some of his greatest success on the soccer field, and as a senior in the fall of '64 he was named captain and team MVP of the Purple Knights. In fact, Bridgeport, a perennial Division I national power back then, made the NCAA tournament during all three of McGee's varsity seasons at UB and twice advanced to the national quarter finals. He also captained the baseball team as a senior in 1965.

It was by way of the University of Bridgeport that McGee found his way to Norwalk. After graduating from UB in 1965, he was hired by City of Norwalk athletic director Joe Troy to teach physical education. Over the next 32 years, McGee would teach at Honey Hill and Fox Run elementary schools, and at West Rocks and Nathan Hale middle schools.

It was during this time McGee entered the coaching ranks, serving first as a head coach and then as an assistant under Ed Faulkner with the Brien McMahon girls softball team. He also assisted Faulkner with the girls basketball team and was on the bench in 1994 when the Lady Senators, led by Rita Williams, captured the Class L state championship. Between the two sports, McGee coached high school athletes for 18 years, while also coaching in the Norwalk International Little League and Norwalk Junior Soccer League.

But his first love was always being on the playing field himself, something McGee continued to do until only a couple of years ago. From 1967-'87 (with the exception of a couple of years), McGee was a standout shortstop and second baseman with the Laurel AC recreation softball team, which won the city championship in 1980, '82, '85, and '86. Then in 1988, he played second base for Cotaling's Auto Body and won a fifth city crown. In 1981, McGee was selected as one of the 10 best softball players in the city of Norwalk.

Championships just seemed to follow Jerry McGee around. He also played defensive back for the Silvermine Nuggets of the Inter-City Touch Football League, another team he helped win a title. And from 1995-'99, McGee played for Edy's in the Norwalk Over-35 Softball League, where he won three more championships.

As if that wasn't enough, McGee even won a couple of championships in the sport of bowling with the Wragg Brothers in the Banker League and with the Laurels in the Friday League.

Over the years, McGee also played softball with La Casa (Old Well), Sportland, Mitchell's, Singewald Buick, and, in the Over-35 league, with the Pastimes and Sandbar. He also played in tournaments with powerhouses such as Sonny's, Chatham Oaks, and Lawrence's Tigers.

Among the many teammates he played with were Fred Petrini, Jim Pulizzi, and Dave Sarpone, who all played with McGee on each of those five city championship teams.

McGee retired from the Norwalk school system in 1997 and from coaching in 2000. He and his wife, the former Beverly Joan Butch, an outstanding coach in her own right with the Brien McMahon girls field hockey team during the 1990s, split their time between two homes in Framingham, MA and Ludlow, VT. The McGees have three children — Kori, Chris, and Todd.